

MOSAIC VOICES

TRAINING SERVICE & HEALING CENTRE
gender equality • support • justice • safety

FEBRUARY - MARCH 2026



A NOTE FROM THE EXECUTIVE DIRECTOR

At MOSAIC, we have learned that lasting change for survivors happens when systems work together. Our Continuum of Care was built on this understanding — connecting justice, healing, prevention, and economic pathways so that survivors are supported not only in moments of crisis, but throughout their journey toward safety and independence.

This work is only possible through strong partnerships. We are deeply grateful to the organisations, institutions, and supporters who continue to stand with MOSAIC as we advance survivor-centred justice and long-term systems change.

Yours in Solidarity,

Adv. Tarisai Mchuchu-MacMillan

As we look ahead, our focus is on scaling what works. By expanding court support services, strengthening coordinated systems through SAFE platforms, and growing Pieces to Peace as a survivor-led enterprise, we are working to ensure that more women and children can access protection, rebuild their lives, and shape safer communities.



REFLECTING AND ALIGNING FOR GREATER IMPACT

In February, the MOSAIC team gathered for our annual Strategic Week, an important moment to reflect on what we have learned and how we can accelerate our impact in the years ahead. Guided by MOSAIC's Theory of Change, teams explored how our programmes can work even more closely together so that survivors experience a seamless pathway of support, rather than navigating disconnected services.

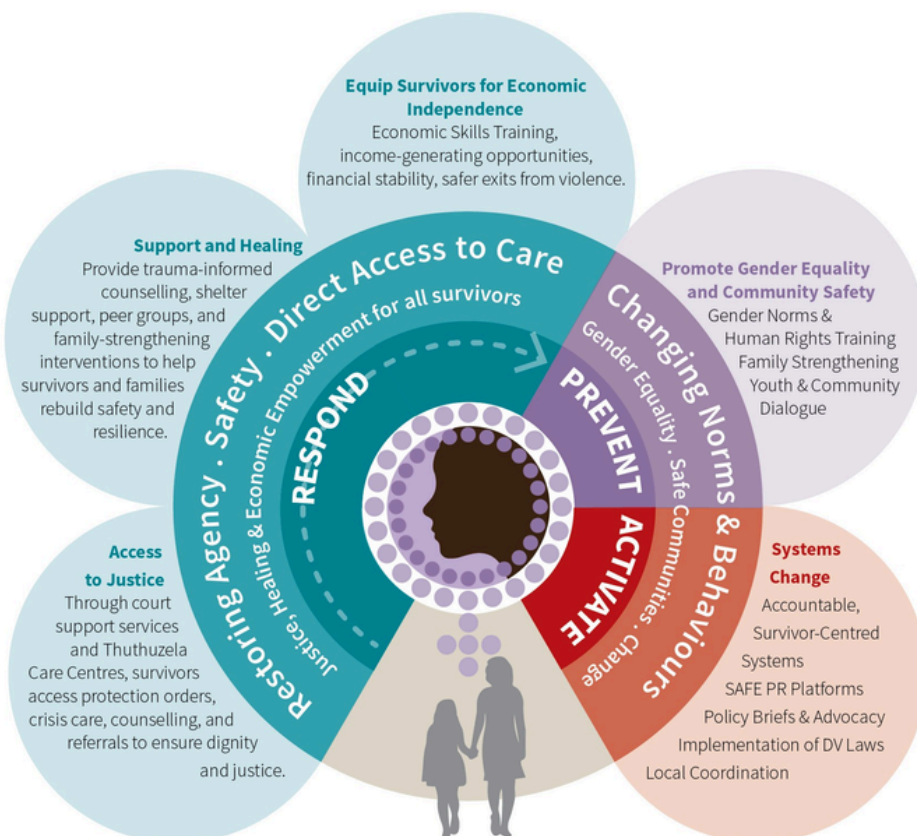
MOSAIC is committed to strengthening systems that protect survivors while expanding solutions that have proven impact. Our Strategy is: **RESPOND**, **PREVENT** and **ACTIVATE**.

Through MOSAIC's Continuum of Care, we support survivors in crisis while transforming the conditions that enable domestic and intimate partner violence in relationships, homes, communities, and systems.



BUILDING THE FUTURE OF SURVIVOR-LED JUSTICE IN 2026

Across South Africa, gender-based violence continues to shape the lives of women and children in profound ways. Many survivors face violence within their own homes and relationships, often navigating systems that are fragmented, under-resourced, and difficult to access.



MOSAIC's Continuum of Care Model

2026 STRATEGY:

Scaling What Works

As MOSAIC looks ahead to 2026, our focus is on accelerating the solutions that strengthen safety, justice, and long-term healing for survivors.



Over the coming year, MOSAIC will focus on:

- **Scaling Court Support Services** so that more survivors can safely access protection orders and navigate the justice system with confidence.
- **Strengthening integration across the Continuum of Care**, ensuring survivors are supported through coordinated services that connect justice, counselling, healing, prevention, and long-term support.
- **Expanding SAFE platforms** to deepen collaboration and accountability across institutions responding to domestic and gender-based violence.
- **Advancing gender-transformative education** with children, families, and communities to prevent violence before it occurs.

Our journey to scale is still unfolding, but we are excited for the next phase:

1. Strengthening partnerships;
2. Refining the model; and
3. Advancing access to justice so that more survivors can live safely and free from violence

This next phase will include:

- Training in marketing, financial management, and contracting.
- Strengthening production capacity and product development.
- Expanding partnerships and markets for Pieces to Peace products.
- Developing models for survivor participation within the enterprise.



The long-term vision is to grow Pieces to Peace into a sustainable enterprise co-created by women, enabling survivors to move from healing toward economic independence and leadership.

LEARN MORE ABOUT OUR WORK AND UPCOMING ACTIVITIES

by visiting www.mosaic.org.za or follow us on social media @mosaicngo

ADVANCING OUR JOURNEY TO SCALE:

Learning with Spring Impact



On 27 February, MOSAIC participated in a regional convening in Johannesburg hosted by Spring Impact in partnership with the Southern Africa Trust, bringing together organisations from across Southern Africa working to transform women's lives

During the convening, our Executive Director, Tarisai Mchuchu-MacMillan and Programmes Director, Ronel E. Stevens shared MOSAIC's journey in scaling the Court Support Services model, which strengthens access to justice for survivors of domestic and intimate partner violence.

Our reflections highlighted key lessons shaping MOSAIC's scaling journey:

- **Scaling with purpose:** Scaling does not mean opening more MOSAIC offices; it means ensuring survivors across South Africa can access high-quality, survivor-centred court support.
- **Partnerships as the engine of scale:** Expanding access to justice requires strong collaboration between NGOs, communities, and institutions.
- **Learning while scaling:** Testing, adapting, and strengthening the model ensures that growth does not compromise quality of care.
- **Investing in scale readiness:** Scaling solutions requires strengthening organisational systems, partnerships, and sustainable funding pathways.

We are grateful to the Spring Impact team for continuing to walk alongside MOSAIC as we refine our scaling strategy.



HUMAN RIGHTS: WHEN RIGHTS MUST BE LIVED, NOT PROMISED

Human Rights Day invites reflection on the rights we hold as a society — yet for many women and children, these rights are defined by whether systems respond when they seek help.

More than 30 years into democracy, the reality remains: human rights cannot exist where women and girls are unsafe. Survivors of domestic and intimate partner violence face not only the harm itself, but systems that are often fragmented and difficult to navigate. Too often, they move between services, carrying the burden of retelling their story and coordinating their own care.

MOSAIC's Continuum of Care responds to this gap by recognising that safety is a process — one that requires coordinated support from justice, to healing, to rebuilding independence. Ultimately, human rights are measured in lived experience: whether survivors can access protection, find support without barriers, and rebuild their lives with dignity.



Advancing human rights means strengthening the systems that make them real by ensuring every survivor can access justice, healing, and long-term safety.

ZIMASA'S JOURNEY THROUGH THE CONTINUUM OF CARE

When Zimasa first walked into the Bellville Magistrate's Court, she wasn't looking for a "continuum of care"—she was looking for a way to stay alive. Like one in three women in South Africa, she had reached a breaking point.

Terrified and overwhelmed by her trauma and legal jargon, Zimasa was met by a MOSAIC Court Support worker. **She became one of the 8 240 survivors we stood beside in 2025.** With our guidance, she joined the 99% of our clients who successfully completed their protection orders and, most importantly, she walked out with a personalised, life saving safety plan.

Zimasa was referred to our Support and Healing programme, where she received counselling from one of our therapeutic social workers and joined a support group of women who understood her silence. **She was one of 2 279 individuals who accessed our trauma-informed counseling last year.**

In her support group, she gained the "critical knowledge for recovery" that 100% of our participants reported learning that the violence wasn't her fault and that healing was possible.



"I used to think the court was the end of my journey. MOSAIC showed me it was just the beginning of my life."

JOIN US: TO SCALE ACCESS TO JUSTICE ACROSS SOUTH AFRICA

MAGISTERIAL COURT STRUCTURE IN SA

MAIN MAGISTERIAL DISTRICT
(approximately 384)



BRANCH COURTS
(approximately 79)



PERIODICAL COURTS
(approximately 235)



OVER 700 COURTS IN TOTAL



ENSURING ACCESS TO JUSTICE IN ALL 9 PROVINCES BECAUSE:

Referral Networks

Crisis Counseling

Safety Planning

Systems Advocacy

Protection Orders Support

OUR FUNDRAISING GOAL:

R30M



Endure For Her is a powerful campaign led by Suzy Whall, using physical endurance to raise awareness and funds in the fight against gender-based violence.

MOSAIC relies on this support to continue providing survivor-centred services, including court support, counselling, and long-term healing and empowerment for those affected by violence.



Support the Endure For Her campaign by donating via the QR code or following Suzy's journey at @endureforher.

R 26 483 of **R 100 000** Goal

26%

DONATE ❤️

